

# 2022 GJ Gardner Homes Open Team Sailing National Championships

G.J. Gardner. HOMES



**Saturday 4<sup>th</sup> June to Monday 6<sup>th</sup> June**

**Kerikeri Cruising Club, Doves Bay**

## **Notice of Race**

The Organising Authority is the Kerikeri Cruising Club in conjunction with the New Zealand Open Team Racing Association Inc.

### **1.0 Rules**

- 1.1 The event will be governed by the 'rules' as defined in the *Racing Rules of Sailing 2021-2024*, including Appendix D.
- 1.2 The Yachting New Zealand Safety Regulations Part 1 shall apply.

### **2.0 Changes to Racing Rules**

The Racing Rules will be changed in accordance with RRS 86 as follows:

- 2.1 In RRS D1.2(d)(1) and RRS D2.4(c) change "black and white" to "black".
- 2.2 In RRS D 5.2, change "red" to "yellow".

### **3.0 Eligibility**

- 3.1 Entries will be accepted from teams of six sailors of any age or gender, all of whom shall be members of a yacht club affiliated to YNZ. By entering this event each team member will become automatic members of the New Zealand Open Team Sailing Association Incorporated with membership included in this entry fee.
- 3.2 The two crew members of each boat shall weigh a minimum of 130kg combined body weight, except that crews between 120kg and 130kg may make up their weight to 130kg with a maximum of 10kg in approved sand filled bottles which shall be fixed in the boat near the mast step. These bottles shall be marked in waterproof ink with the team name, weight and

crew combination requiring the weight. If a crew combination is close to or under the weight limitation, the team members shall be weighed in normal dry sailing gear.

3.3 **Entries will be accepted until the closing date of April 30, 2022**, by submitting the entry form to [corbett.reuben@gmail.com](mailto:corbett.reuben@gmail.com) and paying the entry fee of \$650 via direct credit to NZOTRI. Bank Account Number **12 3091 0036116 00**

3.4 A damage deposit of \$500 per team is required and must be lodged with the entry fee. In the event of a team causing major damage to a boat or boats, exceeding \$500, they will be required to pay an additional amount to cover the cost of that damage. If they wish to continue competing in the event a further deposit of \$500 will be required.

#### **4.0 Boats and Equipment**

4.1 The event will be sailed in 420 type yachts. Spinnakers and trapezes will not be permitted. NZOTRI will coordinate the supply of all the 420 type yachts required for the event. Boats will be allocated according to a draw and shall not be modified except as set out in the Sailing Instructions.

4.2 Boats will be fitted with specific mainsails, being 200mm shorter in the leech than a standard 420 main and the size of a Sunburst class main when reefed, and coloured standard sized jibs. Mains will be reefed at the Race Officers discretion. All boats will be equalized as much as possible.

4.3 Red protest flags and yellow break down flags will be supplied. You are also permitted to supply your own.

4.4 Buoyancy vests must be worn by competitors and supporters at all times while afloat.

#### **5.0 Schedule of Events**

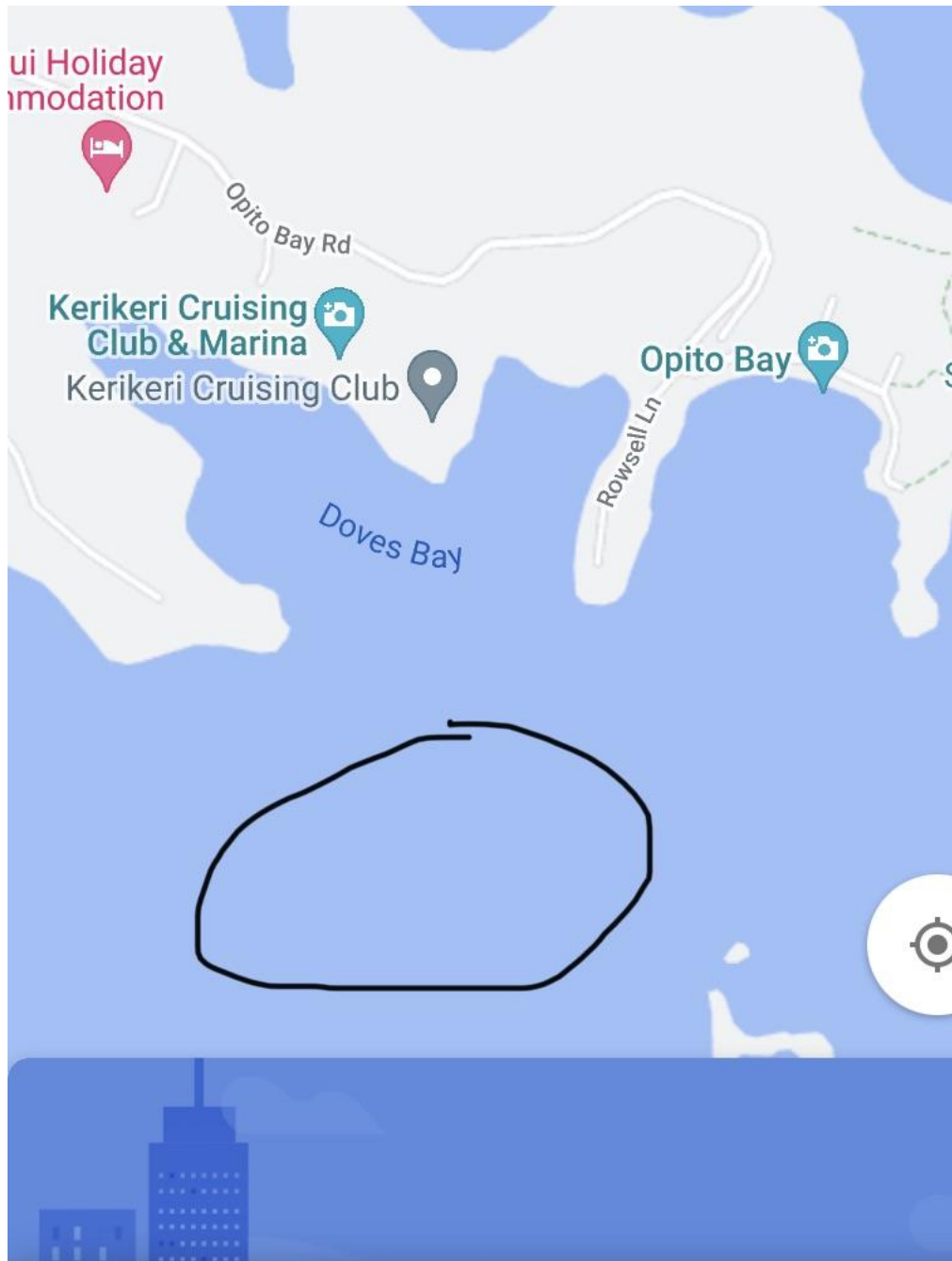
Saturday 4 <sup>th</sup> June	08:30	Registration & Weigh in
Saturday 4 <sup>th</sup> June	09:00	Briefing
Saturday 4 <sup>th</sup> June	09:45	Time of first warning signal
Sunday 5 <sup>th</sup> June	09:30	Time of first warning signal
Monday 6 <sup>th</sup> June	09:30	Time of first warning signal
		30min after last race approx for Prize Giving

#### **6.0 Sailing Instructions**

Sailing instructions will be available from June 4<sup>th</sup> on the official Kerikeri Cruising Club noticeboard which is located at the bottom clubhouse. They will also be posted on the NZ Open Team Racing Nationals Facebook Group one month prior to the event.

## 7.0 Racing Area

The races will be held in Dove's Bay. The sailing area is circled in black in the photo below and the Kerikeri Cruising Club location is pinned.



## 8.0 Courses and Racing Format

8.1 The course will be an S shape with starboard rounding of the first mark.

8.2 The series will consist of a number of round robin races, with a knockout finals series to determine the winner. The intention is to have all teams involved in the knockout finals series.

## 9.0 Scoring

9.1 Scoring will be in accordance with RRS Appendix D3 and D4.

## 10.0 Prizes

The winning team will be awarded the New Zealand Open Team Racing National Championship Trophy.

## 11.0 Support Boats

Support boats will be allowed but must operate in accordance with the Race Officer's instructions.

## 12.0 Disclaimer and Liability

12.1 RRS 3 states: 'The responsibility for a boat's decision to participate in a race or to continue to race is hers alone.' By participating in this event each competitor agrees and acknowledges that sailing is a potentially dangerous activity with inherent risks. These risks include strong winds and rough seas, sudden changes in weather, failure of equipment, boat handling errors, poor seamanship by other boats, loss of balance on an unstable platform and fatigue resulting in increased risk of injury. **Inherent in the sport of sailing is the risk of permanent, catastrophic injury or death by drowning, trauma, hypothermia or other causes.**

12.2 Yachting New Zealand, in association with the NZ Open Team Sailing Association, intend producing a highlights show on the NZ Open Team Racing Nationals to be screened on Sky Sport Next and their YouTube channel. Yachting New Zealand has adopted the [Charter on the Broadcast and Sponsorship of Secondary School Sport](#). Highlights of this event may be available on demand, free, on Sky Sport Next and/or Sky Sport. If you have any questions or wish to discuss your participation in the broadcast, please contact [michaelb@yachtingnz.org.nz](mailto:michaelb@yachtingnz.org.nz) prior to close of entries. It is the responsibility of the entering team to acquire appropriate parental/guardian consent if needed.

## 13.0 Covid Policy

All competitors must comply with the Kerikeri Cruising Club Covid Policy.

## 14.0 Further Information

G.J. Gardner. HOMES

If you have any further enquiries please contact Reuben Corbett for assistance on 02102994752 or [Corbett.reuben@gmail.com](mailto:Corbett.reuben@gmail.com).

## 2022 GJ Gardner Homes

# Open Team Sailing National Championships

G.J. Gardner. HOMES



Saturday 4<sup>th</sup> June to Monday 6<sup>th</sup> June

Kerikeri Cruising Club, Doves Bay

### ENTRY FORM

**ALL ENTRIES MUST BE RECEIVED by 10pm on the 30<sup>th</sup> April 2022**  
**including payment of \$650 Entry Fee and \$500 Damage Deposit**

Team Name .....

	NAME	WEIGHT (kg)	SEX	YNZ AFFILIATED CLUB
BOAT 1	SKIPPER			
	CREW			
BOAT 2	SKIPPER			
	CREW			
BOAT 3	SKIPPER			
	CREW			
Contact Person				
Email	Phone Mobile:			

We agree to be bound by the Racing Rules of Sailing and all other rules that govern this event. We understand that neither the Organising Authority and its officers, members and servants or other persons assisting with the conduct of the regatta accept any responsibility in respect of any injury or loss to person or property that may be sustained by reason of participation in the regatta or howsoever arising in connection with the regatta. We agree to the use of our photograph(s) and other relevant information in any event publicity and in the ongoing promotion of New Zealand yachting. We agree to the Organising Authority and Yachting New Zealand holding the above information for the general administration and well-being of the sport, and for them to retain, use and disclose the information to affiliated organisations and any other persons or organisations that Yachting New Zealand believes will further the interests and objectives of Yachting New Zealand. We acknowledge my right to access to and correction of this information. The consent is given in accordance with the Privacy Act 1993.